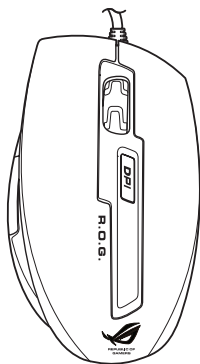




# ASUS GX850 ROG Gaming Mouse



## User Manual

E6822  
First Edition (V1)  
August 2011

**Copyright © 2011 ASUSTeK Computer Inc. All Rights Reserved.**

No part of this manual, including the products and software described in it, may be reproduced, transmitted, transcribed, stored in a retrieval system, or translated into any language in any form or by any means, except documentation kept by the purchaser for backup purposes, without the express written permission of ASUSTeK Computer Inc. ("ASUS").

Product warranty or service will not be extended if: (1) the product is repaired, modified or altered, unless such repair, modification or alteration is authorized in writing by ASUS; or (2) the serial number of the product is defaced or missing.

ASUS PROVIDES THIS MANUAL "AS IS" WITHOUT WARRANTY OF ANY KIND, EITHER EXPRESS OR IMPLIED, INCLUDING BUT NOT LIMITED TO THE IMPLIED WARRANTIES OR CONDITIONS OF MERCHANTABILITY OR FITNESS FOR A PARTICULAR PURPOSE. IN NO EVENT SHALL ASUS, ITS DIRECTORS, OFFICERS, EMPLOYEES OR AGENTS BE LIABLE FOR ANY INDIRECT, SPECIAL, INCIDENTAL, OR CONSEQUENTIAL DAMAGES (INCLUDING DAMAGES FOR LOSS OF PROFITS, LOSS OF BUSINESS, LOSS OF USE OR DATA, INTERRUPTION OF BUSINESS AND THE LIKE), EVEN IF ASUS HAS BEEN ADVISED OF THE POSSIBILITY OF SUCH DAMAGES ARISING FROM ANY DEFECT OR ERROR IN THIS MANUAL OR PRODUCT.

SPECIFICATIONS AND INFORMATION CONTAINED IN THIS MANUAL ARE FURNISHED FOR INFORMATIONAL USE ONLY, AND ARE SUBJECT TO CHANGE AT ANY TIME WITHOUT NOTICE, AND SHOULD NOT BE CONSTRUED AS A COMMITMENT BY ASUS. ASUS ASSUMES NO RESPONSIBILITY OR LIABILITY FOR ANY ERRORS OR INACCURACIES THAT MAY APPEAR IN THIS MANUAL, INCLUDING THE PRODUCTS AND SOFTWARE DESCRIBED IN IT.

Products and corporate names appearing in this manual may or may not be registered trademarks or copyrights of their respective companies, and are used only for identification or explanation and to the owners' benefit, without intent to infringe.

## Contents

<b>Notices.....</b>	<b>5</b>
<b>Package Contents .....</b>	<b>7</b>
<b>Specifications Summary .....</b>	<b>7</b>
<b>Knowing your ASUS GX850 ROG Gaming Mouse .....</b>	<b>8</b>
<b>Connecting your ASUS GX850 ROG Gaming Mouse .....</b>	<b>8</b>
<b>Customizing your ASUS GX850 ROG Gaming Mouse .....</b>	<b>8</b>
<b>Using the DPI switch.....</b>	<b>18</b>

## Contact Information

### ASUSTeK COMPUTER INC.

Address	15 Li-Te Road, Peitou, Taipei, Taiwan 11259
Telephone	+886-2-2894-3447
Fax	+886-2-2890-7798
E-mail	info@asus.com.tw
Web site	www.asus.com.tw

#### **Technical Support**

Telephone	+86-21-38429911
Online support	support.asus.com

### ASUS COMPUTER INTERNATIONAL (America)

Address	800 Corporate Way, Fremont, CA 94539, USA
Telephone	+1-510-739-3777
Fax	+1-510-608-4555
Web site	usa.asus.com

#### **Technical Support**

Telephone	+1-812-282-2787
Support fax	+1-812-284-0883
Online support	support.asus.com

### ASUS COMPUTER GmbH (Germany and Austria)

Address	Harkort Str. 21-23, D-40880 Ratingen, Germany
Fax	+49-2102-959911
Web site	www.asus.de
Online contact	www.asus.de/sales

#### **Technical Support**

Telephone (Component)	+49-1805-010923*
Telephone (System/Notebook/Eee/LCD)	+49-1805-010920*
Support Fax	+49-2102-9599-11
Online support	support.asus.com

\* EUR 0.14/minute from a German fixed landline; EUR 0.42/minute from a mobile phone.

## Notices

### Federal Communications Commission Statement

This device complies with Part 15 of the FCC Rules. Operation is subject to the following two conditions:

- This device may not cause harmful interference, and
- This device must accept any interference received including interference that may cause undesired operation.

This equipment has been tested and found to comply with the limits for a Class B digital device, pursuant to Part 15 of the FCC Rules. These limits are designed to provide reasonable protection against harmful interference in a residential installation. This equipment generates, uses and can radiate radio frequency energy and, if not installed and used in accordance with manufacturer's instructions, may cause harmful interference to radio communications. However, there is no guarantee that interference will not occur in a particular installation. If this equipment does cause harmful interference to radio or television reception, which can be determined by turning the equipment off and on, the user is encouraged to try to correct the interference by one or more of the following measures:

- Reorient or relocate the receiving antenna.
- Increase the separation between the equipment and receiver.
- Connect the equipment to an outlet on a circuit different from that to which the receiver is connected.
- Consult the dealer or an experienced radio/TV technician for help.

**CAUTION:** Any changes or modifications not expressly approved by the grantee of this device could void the user's authority to operate the equipment.

### Canadian Statement

Industry Canada, Class B

This class "B" digital apparatus complies with Canadian ICES-003.

Cet appareil numérique de la classe "B" est conforme à la norme NMB-003 du Canada.

### Declaration of Conformity (R&TTE directive 1999/5/EC)

The following items were completed and are considered relevant and sufficient:

- Essential requirements as in [Article 3]
- Protection requirements for health and safety as in [Article 3.1a]
- Testing for electric safety according to [EN 60950]
- Protection requirements for electromagnetic compatibility in [Article 3.1b]



**CE Mark Warning**

This is a Class B product, in a domestic environment, this product may cause radio interference, in which case the user may be required to take adequate measures.

## Safety Certifications

• C-Tick Mark: N13219

• BSMI Certification: R41108



电子信息产品污染控制标示：图中之数字为产品之环保使用期限。仅指电子信息产品中含有的有毒有害物质或元素不致发生外泄或突变从而对环境造成污染或对人身、财产造成严重损害的期限。

产品中有毒有害物质或元素的名称及含量

部件名称	有毒有害物质或元素					
	铅(Pb)	汞(Hg)	镉(Cd)	六价铬(Cr(VI))	多溴联苯(PBB)	多溴二苯醚(PBDE)
电线	○	○	○	○	○	○
上下盖	○	○	○	○	○	○
电路板	○	○	○	○	○	○
滚轮	○	○	○	○	○	○
脚垫	○	○	○	○	○	○
电子部件	X	○	○	○	○	○

○：表示该有毒有害物质在该部件所有均质材料中的含量均在 SJ/T 11363-2006 标准规定的限量要求以下。  
 X：表示该有毒有害物质至少在该部件的某一均质材料中的含量超出 SJ/T 11363-2006 标准规定的限量要求。  
 (电子部件符合欧盟豁免标准。如：电子陶瓷中的铅(Lead in electronic ceramic part, e.g.: Ceramic resistance))



在中华人民共和国境内销售的电子信息产品上将印有“环保使用期”(EPUP)符号。圆圈中的数字代表产品的正常环保使用年限。

备注：此产品所标示之环保使用期限，系指在一般正常使用状况下。

## CLASS 1 LASER PRODUCT

Complies with 21 CFR 1040.10 and 1040.11 except for deviations pursuant to Laser Notice No. 50, dated June 24, 2007.

## REACH

Complying with the REACH (Registration, Evaluation, Authorisation, and Restriction of Chemicals) regulatory framework, we published the chemical substances in our products at ASUS REACH website at <http://csr.asus.com/english/REACH.htm>.



**DO NOT** throw this product in municipal waste. This product has been designed to enable proper reuse of parts and recycling. This symbol of the crossed out wheeled bin indicates that the product (electrical and electronic equipment) should not be placed in municipal waste. Check local regulations for disposal of electronic products.



**DO NOT** throw the battery in municipal waste. This symbol of the crossed out wheeled bin indicates that the battery should not be placed in municipal waste.

## Package Contents

Check your ASUS GX850 ROG Gaming Mouse package for the following items:

- **ASUS GX850 ROG Gaming Mouse**
- **Quick Start Guide**
- **Support CD**



If any of the above items is damaged or missing, contact your retailer immediately.

## Specifications Summary

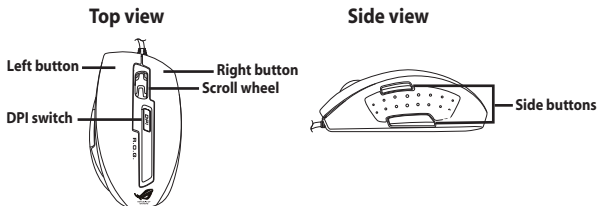
<b>Product Name</b>	GX850 Laser Mouse
<b>OS Support</b>	Windows® XP / Windows® Vista / Windows® 7
<b>Dimensions (mm)</b>	Mouse: 124(L) x 72(W) x 42(H)
<b>Cable Length</b>	1.9M
<b>Weight</b>	Mouse: 150g
<b>Buttons / Switches</b>	1 x Left button / Right button / Scroll wheel 2 x Side buttons 1 x DPI switch
<b>Resolution</b>	1250 / 2000 / 3500 / 4500 / 5000dpi (default)
<b>Power Rating</b>	5V, 100mA
<b>Interface</b>	USB



Specifications are subject to change without prior notice.

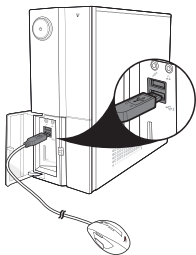
## Knowing your ASUS GX850 ROG Gaming Mouse

Your ASUS GX850 ROG Gaming Mouse comes with a left button, a right button, a scroll wheel, two side buttons, and a specially designed DPI switch.



## Connecting your ASUS GX850 ROG Gaming Mouse

Connect your ASUS GX850 ROG Gaming Mouse to your computer's USB port.



## Customizing your ASUS GX850 ROG Gaming Mouse


The bundled support CD includes a specially designed program that you can install to avail all the features of your mouse. Place the support CD into the optical drive and follow the onscreen instructions to complete the installation.



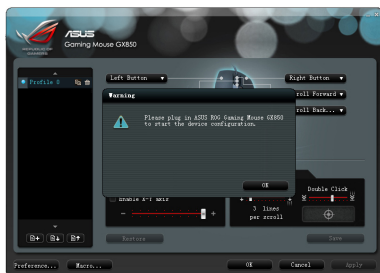
If Autorun is NOT enabled in your computer, browse the contents of the support CD to locate the **setup.exe** file. Double-click the **setup.exe** file, and then follow the onscreen instructions to complete the installation.



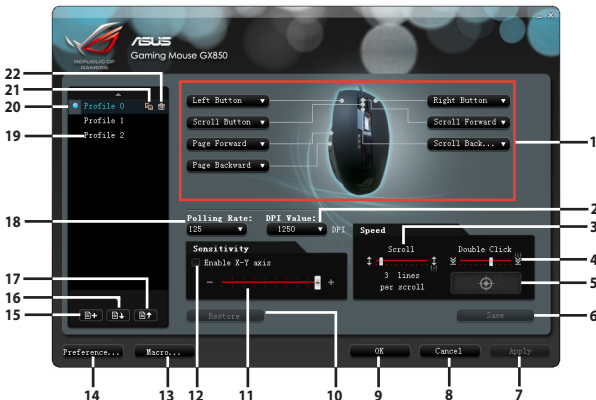
## Launching the program

After the program is successfully installed, double-click the ROG icon  from the Windows® notification area, or click **Start > All Programs > ASUS Gaming Mouse GX850 > ASUS ROG Gaming Mouse GX850** to launch the program.

If the screen below appears, plug your ASUS GX850 ROG Gaming Mouse into your computer's USB port and then click **OK** to relaunch the program.



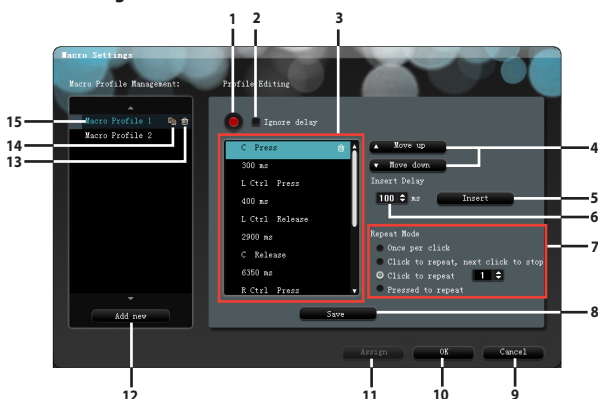
## Main menu



Items	Descriptions
1.	Select a function for each button / action from the dropdown list. * Refer to the table on the next page for more details.
2.	Click to select a resolution from the dropdown list.
3.	Drag the slider to adjust the scroll speed.
4.	Drag the slider to adjust the double-click speed.
5.	Double-click this icon to test the current double-click speed.
6.	Click to save the changes you have made to the selected profile.
7.	Click to apply the selected profile.
8.	Click to discard the changes you have made and close the screen.
9.	Click to save the changes you have made and close the screen.
10.	Click to restore the last settings you have made.
11.	Click to adjust the mouse sensitivity.
12.	Tick to enable or disable changing the mouse sensitivity through adjusting the X-axis and/or Y-axis values.
13.	Click to bring up the Macro Settings window. See page 12 for details.
14.	Click to bring up the Preferences window. See page 13 for details.
15.	Click to create a new profile. * The maximum number of allowed profile settings is 25.
16.	Click to import a profile from your computer.
17.	Click to export a profile to your computer.
18.	Click to select a polling rate from the dropdown list.
19.	Double-click on the profile name to change it.
20.	The blue dot next to the item indicates the active profile.
21.	Click to duplicate the selected profile.
22.	Click to delete the selected profile. * The active profile cannot be deleted.

Items	Descriptions
<b>Left Button</b>	Mimics the behavior of the standard left mouse button.
<b>Right Button</b>	Mimics the behavior of the standard right mouse button.
<b>Scroll Button</b>	When selected, press the button to perform the standard scrolling function.
<b>Burst Fire</b>	When selected, press the button to do a burst fire in a click-to-attack game, which is the same as triple-clicking the left mouse button. See page 14 for details.
<b>Page Forward</b>	When selected, press the button to go to the next page you viewed, which is the same as pressing <Alt + Right>.
<b>Page Backward</b>	When selected, press the button to go to the previous page you viewed, which is the same as pressing <Alt + Left>.
<b>Macro</b>	When selected, press the button to run a command or a series of commands which you can edit through the Macro Profile Management menu. See page 15 for more details.
<b>Launch Program</b>	When selected, press the button to launch the program that you specified. See page 16 for details.
<b>One Touch Setting</b>	When selected, press the button to launch this program.
<b>My Computer</b>	When selected, press the button to open My Computer window.
<b>Web Browser</b>	When selected, press the button to launch your default web browser.
<b>E-mail Client</b>	When selected, press the button to launch your default email application.
<b>Mute</b>	When selected, press the button to turn the volume's mute mode on/off.
<b>Media Player/ PlayPause</b>	When selected, press the button to launch your default media player or play / pause the playback in an active media player.
<b>Application Switch</b>	When selected, press the button to switch among the running applications, which is the same as you press <Alt + Tab>. * This function only works under Windows® 7 / Vista.
<b>Scroll Forward / Backward</b>	When selected, press the button to scroll forward / backward as a scroll wheel does. * This function only works in the Microsoft® Office applications under Windows® 7 / Vista.

## Macro Settings menu

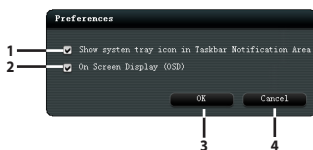


Items	Descriptions
1.	Click to start recording the keystrokes and click again to stop. * You can record maximum 120 keystrokes for each profile.
2.	Tick to ignore all time delays between keystrokes.
3.	Displays the recorded keystrokes and the time delays during recording.
4.	Click to move up/down the selected keystrokes or time delays.
5.	Click to insert the time delay.
6.	Click to select the delay time you want to insert.
7.	Click to select the repeat mode. <ul style="list-style-type: none"> <li>• <b>Once per click:</b> Select to perform the macro profile once when clicking the mouse button.</li> <li>• <b>Click to repeat, next click to stop:</b> Select to repeat performing the macro profile when clicking the mouse button and clicking the button again to stop.</li> <li>• <b>Click to repeat:</b> Select how many times you want to repeat performing the macro profile when clicking the mouse button. Select the repeated times from the dropdown list.</li> <li>• <b>Pressed to repeat:</b> Select to repeat performing the macro profile when holding down your mouse button and release the button to stop.</li> </ul>
8.	Click to save the changes you have made to the selected profile.

*continued on the next page*

Items	Descriptions
9.	Click to disregard the changes you have made and close the screen.
10.	Click to save the changes you have made and close the screen.
11.	Click to assign the selected profile to a mouse button.
12.	Click to create a new macro profile. *The maximum number of allowed Macro settings is 25.
13.	Click to deleted the selected macro profile.
14.	Click to duplicate the selected macro profile.
15.	Double-click on the profile name to change it.

## Preferences menu



Items	Descriptions
1.	Tick to show the ROG icon in Windows Notification Area.
2.	Tick to enable the onscreen display function.
3.	Click to save the changes you have made and close the screen.
4.	Click to disregard the changes you have made and close the screen.

## Burst Fire menu



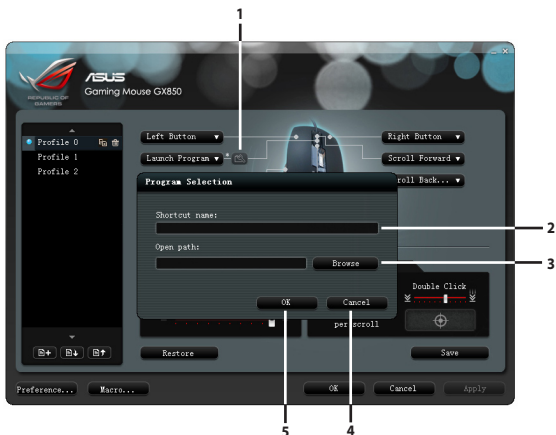
Items	Descriptions
1.	Click to launch the Burst Fire menu.
2.	Click to select the burst fire mode. • <b>3 Rounds Mode</b> : Select to fire three rounds when click the mouse button. • <b>5 Rounds Mode</b> : Select to fire five rounds when click the mouse button. • <b>Full Automatic Mode</b> : Select to fully fire automatically when clicking the mouse button and clicking again to stop.
3.	Click to save the changes you have made and close the screen.
4.	Click to discard the changes you have made and close the screen.

## Macro Settings menu



Items	Descriptions
1.	Click to launch the Macro Settings menu.
2.	Click to assign the selected profile to a mouse button.
3.	The blue dot next to the item indicates the active macro profile.

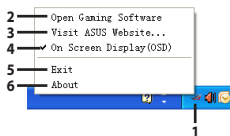
## Program Selection menu



Items	Descriptions
1.	Click to launch the Program Selection menu.
2.	Key in the shortcut name of the program you want to run when clicking the mouse button.
3.	Select a program you want to run when clicking the mouse button.
4.	Click to disregard the changes you have made and close the screen.
5.	Click to save the changes you have made and close the screen.



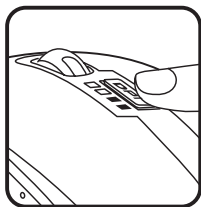
## Taskbar menu



Items	Descriptions
1.	The ROG logo appears on the taskbar when the program is properly installed.
2.	Click to launch the main menu of this program.
3.	Click to visit the ASUS official website.
4.	Click to enable / disable the onscreen display function.
5.	Click to exit this program.
6.	Click to check the application version and the driver version.

## Using the DPI switch

Press the DPI switch on the top of your ASUS GX850 ROG Gaming Mouse to select a DPI value and change the mouse resolution. The LEDs next to the DPI switch light up when you press the button. See the table below for the LEDs indications.



Number of lit LEDs	Indications
0	1250 dpi
1	2000 dpi
2	3500 dpi
3	4500 dpi
4	5000 dpi